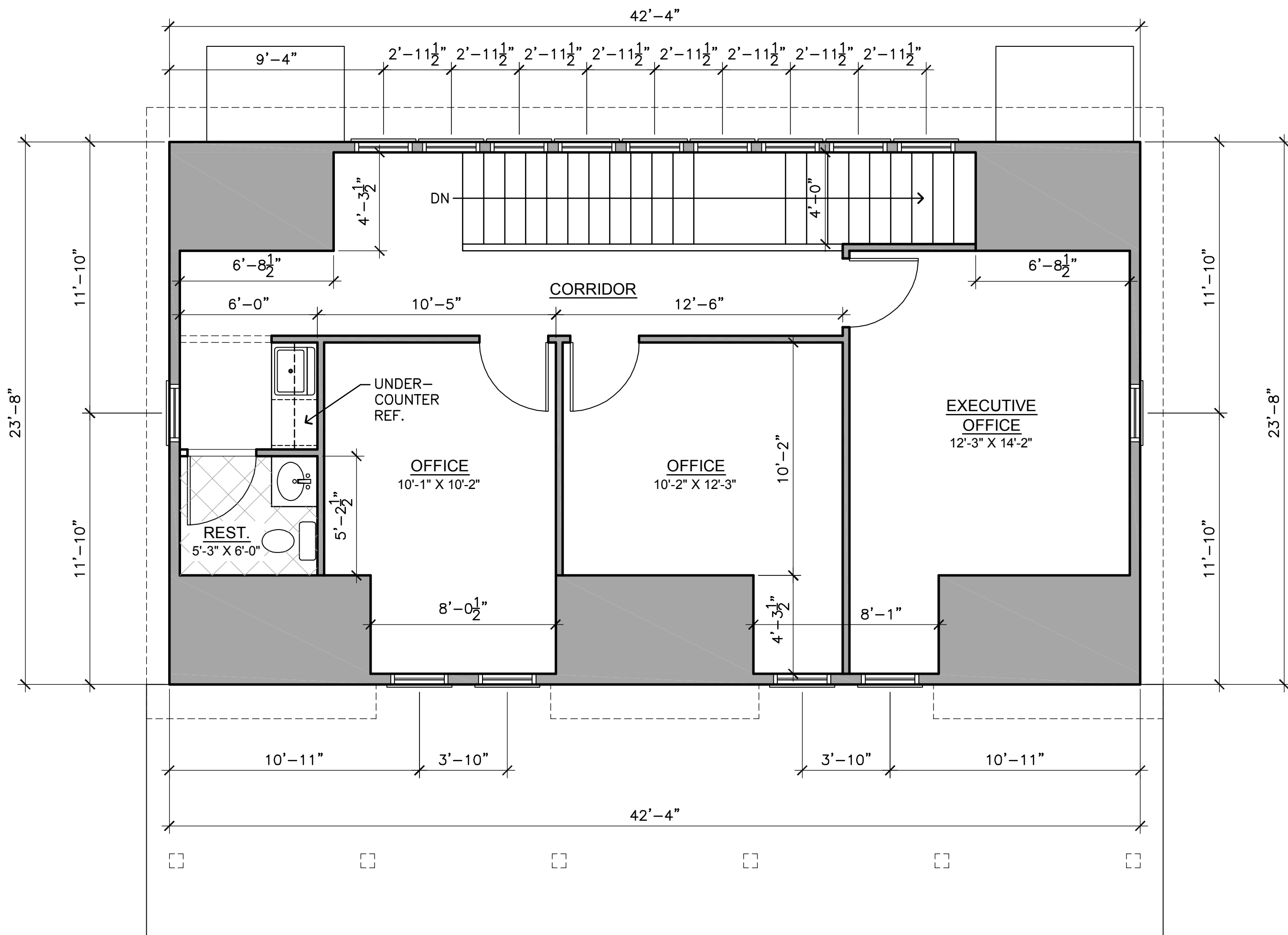


PRELIMINARY FIRST FLOOR PLAN

HISTORIC RILEY HOUSE VISITOR CENTER

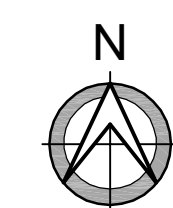
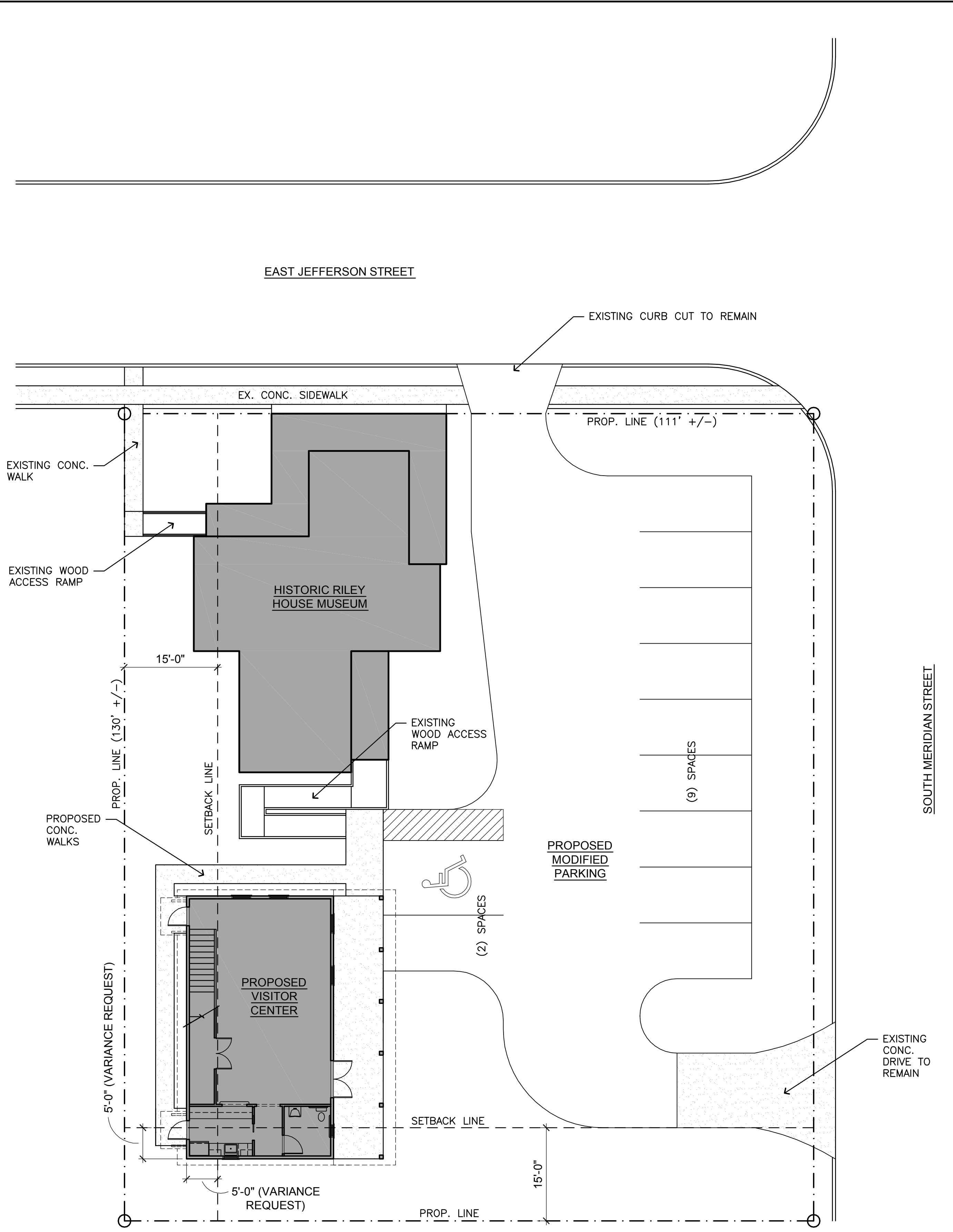
1/4"=1'-0" - 1,002 G.S.F.



PRELIMINARY SECOND FLOOR PLAN

HISTORIC RILEY HOUSE VISITOR CENTER

1/4"=1'-0" - 840 G.S.F.



PRELIMINARY SITE PLAN

HISTORIC RILEY HOUSE VISITOR CENTER

3/32"=1'-0"

VISITOR CENTER FOR THE HISTORIC RILEY HOUSE MUSEUM
419 EAST JEFFERSON STREET, TALLAHASSEE, FLORIDA

PRELIMINARY SITE PLAN & FLOOR PLANS

CONN ARCHITECTS
ASSOCIATES
1870 Calhoun Blvd. • Tallahassee, Florida 32308 • Phone: 904.878.7878
www.connandassociates.com • License No. AA-C001662

DATE	APR. 19, 2011
DRAWN BY	SAM
REVISED	MAY 5, 2011
JOB NO.	11-110

DATE	
SHEET NUMBER	A1.0

COPYRIGHT © 2011 CONN & ASSOCIATES, INC. ALL RIGHTS RESERVED. PRINTED IN THE UNITED STATES OF AMERICA.
 ANY MEANS OF ELECTRONIC, MECHANICAL, PHOTOCOPYING, RECORDING, OR OTHERWISE, WITHOUT THE PRIOR WRITTEN PERMISSION
 OF CONN & ASSOCIATES, INC.